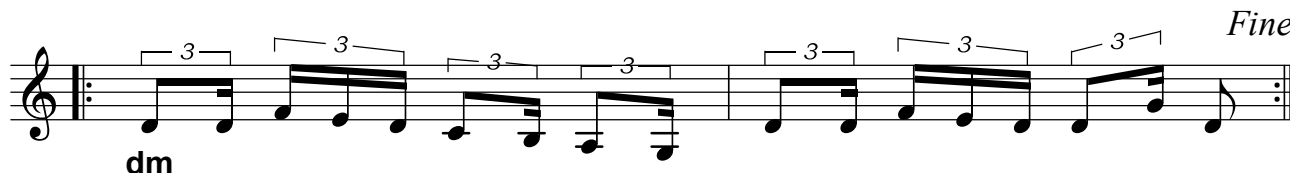


Drísta

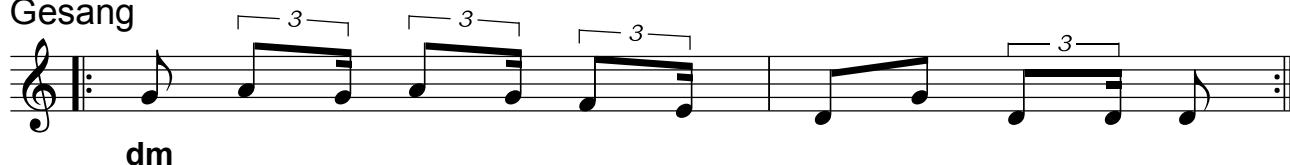
Griechenland - Westthrakien

Notation: Birgitt Karlson - 10/2010

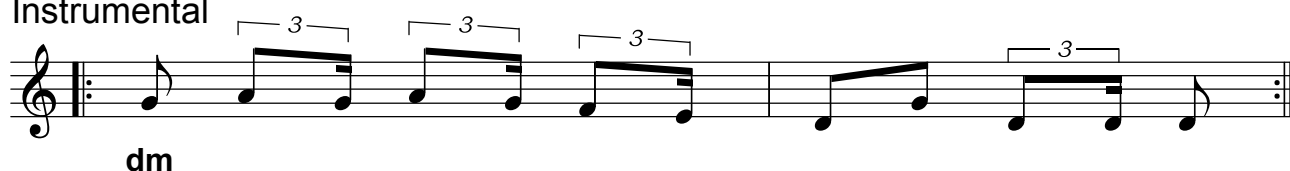
Instrumental



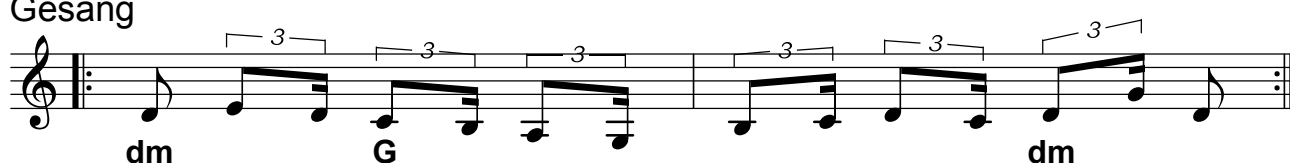
Gesang



Instrumental



Gesang



1. // Anathema, anathema ton pou tha pi. //
Ta adherfia dhen poniounte mavra ta matia mou,
ta adherfia dhen poniounte chelidhonaki mou.
2. // Ta adherfia ski-, ta adherfia skizoun ta vouna. //
Ke dhenra xerizonoun mavra ta matia mou,
ke dhenra xerizonoun chelidhonaki mou.
3. // Dhio adherfia ichan, adherfia ichan mia adherfi. //
Ston kosmo xakousmeni mavra ta matia mou,
ston kosmo xakousmeni chelidhonaki mou.
4. // Tin fthonaje, tin fthonaje i jitionia. //
Tin zileye i chora mavra ta matia mou,
tin zileye i chora chelidhonaki mou.
5. // Tin zilepse, tin zilepse ki o charodas. //
Ke theli na tin pari mavra ta matia mou,
ke theli na tin pari chelidhonaki mou.